



"By the power of air and light, I summon truth to take flight. As I hold this clove so dear, bring me favor from those who hear."

The **Judge's Favor Spell** is a powerful Wiccan ritual designed to tip the scales in your favor during a court case. No matter which side of the legal battle you're on.

It turns a simple clove into a powerful charm to manifest an outcome in your favor.

This spell comes from one of our coven's *oldest Grimoires*, but it's been updated for a modern-day court case.

We'll perform this ritual for you and teach you how to do it for yourself.

Who Are We?

Our coven is a family tradition stretching back a *long, long time*. Our coven Grimoire has been passed between generations, and now, we're adapting it for the digital age.

We aim to bring a new age of digital witchcraft into the modern day. Adapting ancient magick to the present and making it available to spiritual seekers worldwide.

Our coven performs rituals several times a week and does our best to support the spiritually gifted in unlocking their own power.



Let Us Cast For You

Don't let *anyone* tell you that Wicca is something only the special or few can do. *Anyone* can learn. **However, we can do this entire ritual for you if you'd like.**

It's *entirely optional* to have us cast for you. But if you [click here](#), we'll ask you a few questions about the focus and goal of your spell and perform the entire thing for you.

Note: This is our [priority spell request](#) and is *not* publically available (so please don't spread it around).

There's an option for *when* you want your ritual performed. With this priority request, we'll put you right at the front, so selecting 'next available' is often the same day.

We *might* email you with follow-up questions before your ritual is performed, but often (if you've given us enough to work with), we'll perform it that day (or night) and email you once finished.

If you'd like us to cast for you - [click here](#). If not, please continue on, and we'll teach you how to do this ritual yourself.

Casting It Yourself

Note: If you already have your own practices for spellwork, *feel free to include them*. **Always** work with your own inner strengths, so feel free to add to our ritual as you like.

Before beginning, we *always* create a protective circle around our space. Sometimes spiritual work can attract the attention of negative entities or energies.

A protective circle serves as a barrier to shield practitioners from these potentially harmful forces, creating a safe and sacred space for conducting rituals and spellwork.

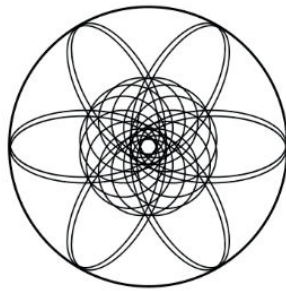
Casting a Protective Circle

Casting a circle is one of the basic practices of witchcraft. To begin any ritual or spell we need a sacred magickal space. In very rare cases, magickal work can attract the attention of unwanted entities and a protective circle prevents them from interfering.

It's simple but important to get right and should be done every time before casting.

A simple circle (for small spells) can be done by placing your finger on the ground (or the air around you) and turning 360 degrees clockwise. Make sure you lean forwards and give yourself plenty of space within the circle to work. Repeat it three times, and while doing so you can chant out loud or within your head:

*I cast this circle three times three. Light protect me, hear my plea. **So mote it be!***

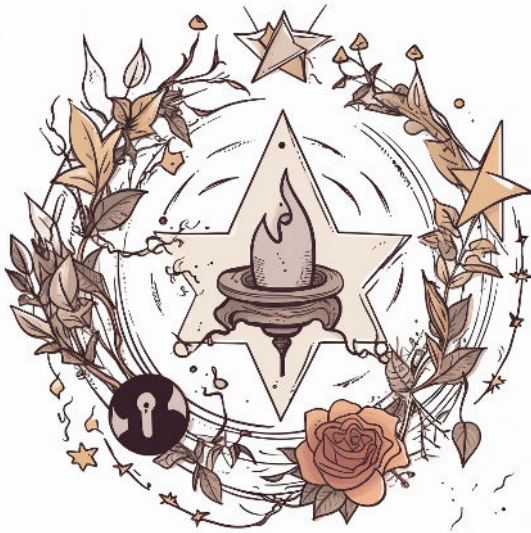


After you're finished hold an image in your mind's eye of the circle of white light now surrounding you. If you find focusing on the circle difficult, you can draw the circle around you with chalk or salt.

Once your circle is cast you can continue the rest of the ritual.

Once finished, it's good practice to close the circle after you by tracing your finger anti-clockwise along where the circle was.

Now that your circle is prepared, we can perform your ritual.



You Will Need

1. A single **clove**
2. A small piece of **paper**
3. A **blue candle** (for justice and truth)
4. A **black pen** or marker
5. A pinch of **sage** (for purification)
6. A fireproof dish or container

Preparing the Ritual

1. **Cleanse** the area where you will perform the ritual, ensuring it is free from clutter and distractions.
2. **Meditate** or practice deep breathing exercises for a few minutes to clear your mind and focus on your intentions.
3. **Arrange** all spell items before you, preferably on an altar or surface dedicated to your practice.
4. **Light** some sage or incense to cleanse the space further and create an atmosphere that encourages positive energies.
5. **Ask** for guidance and assistance from your chosen deities, spirit guides, or ancestors as you embark on this magical journey.

Casting the Spell

1. **Light** the blue candle and place it on your altar or designated surface, allowing its flame to represent truth and justice.
2. On the small piece of paper, **write** down your intention for a positive outcome in your court case; be *specific* about the desired results.
3. Fold the paper three times while focusing intently on your desired outcome. Then, hold the folded paper between your hands and repeat this rhyming Wiccan chant: *“By the power of air and light, I summon truth to take flight. As I hold this clove so dear, bring me favor from those who hear.”*
4. Place the clove within the folds of the paper, symbolically locking in your intentions.
5. **Burn** the folded paper containing the clove in your fireproof dish or container, letting its smoke carry your intentions toward manifestation.
6. As you watch it burn, visualize yourself winning over the judge and experiencing a victorious outcome.
7. Once everything has burned down completely, **safely dispose** of any remaining ash outdoors, returning it to nature.

Making Your Spell More Potent

You can do a couple of things to make your court case even more potent.

1. **Personalize** your ritual by adding an item or symbol representing yourself and the court case, such as a copy of the legal document or a photograph from a crucial moment. This will strengthen your connection to your intentions and help guide the energies toward your desired outcome.
2. Align your spellwork with the **lunar phases** for maximum effectiveness. Casting this spell during a New Moon can help facilitate new beginnings and encourage positive change, whereas performing it on a Full Moon may amplify the power of your intentions.
3. Additionally, you could enhance your spellwork by incorporating **crystals** that resonate with justice and success, such as lapis lazuli, amethyst, or tiger’s eye. Place these crystals near the candle while casting your spell, or carry them in your pocket throughout the days leading up to your court case to channel their supportive energies.
4. We have a ["magick ability test"](#) created to help you find your natural affinities. If you're struggling to see results with your spell casting - [take the test](#), and sometimes a small tweak to make a ritual fit more into your natural strengths can have a **big** impact.

A *common* practice with spellwork like this is to re-cast the spell. We can [re-cast this spell for you](#), but *please* wait for at least 7-days before requesting a re-cast.

Important

No matter if you're adding these spells to your own book of shadows or having us cast it for you. Spellwork like this should be considered for **entertainment purposes only**.

We can't guarantee results (nobody can) and our goal is to work *with* the universe and its energy.

There are many different beliefs about how Wicca can (or *should*) work. We won't press our beliefs on you but witchcraft **is not intended to replace legal, financial, medical or professional advice**.

Use your spellwork practices to *support you*. Don't let it hold you back.